



Western Region 2014 Training Webinars

A couple of Quick Reminders



Sample Shipping Boxes

- Combining samples with separation



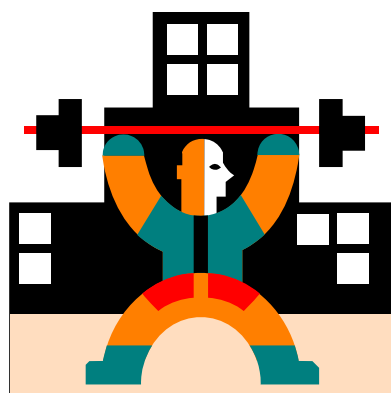
- Appreciate trying to save money



- Boxes ~ 50 pounds or less



- Over 75 pounds





Targeted Trials

- We have **60** targeted trials to inspect for 2014
- You should have received emails containing requests for dates of the applications and harvests of those selected trials.
 - Exact Dates
 - Rough Estimates
 - Not sure, but possibly maybe, kind of guessing here, but, damn, I'll put down something, it might happen

Any date is better than no date at all.





Targeted Trials

- Things to remember;
- The way targets are chosen is ensuring each IR-4 study should have a least one visit by QA and is well represented in studies with a high number of trials.
- Part of our targets list include unusual applications/ harvests and trials only done in the Western Region.
- Targeted trials, of course, are the reason for our visit, but we will always be interested in watching any other trials happening that same day.

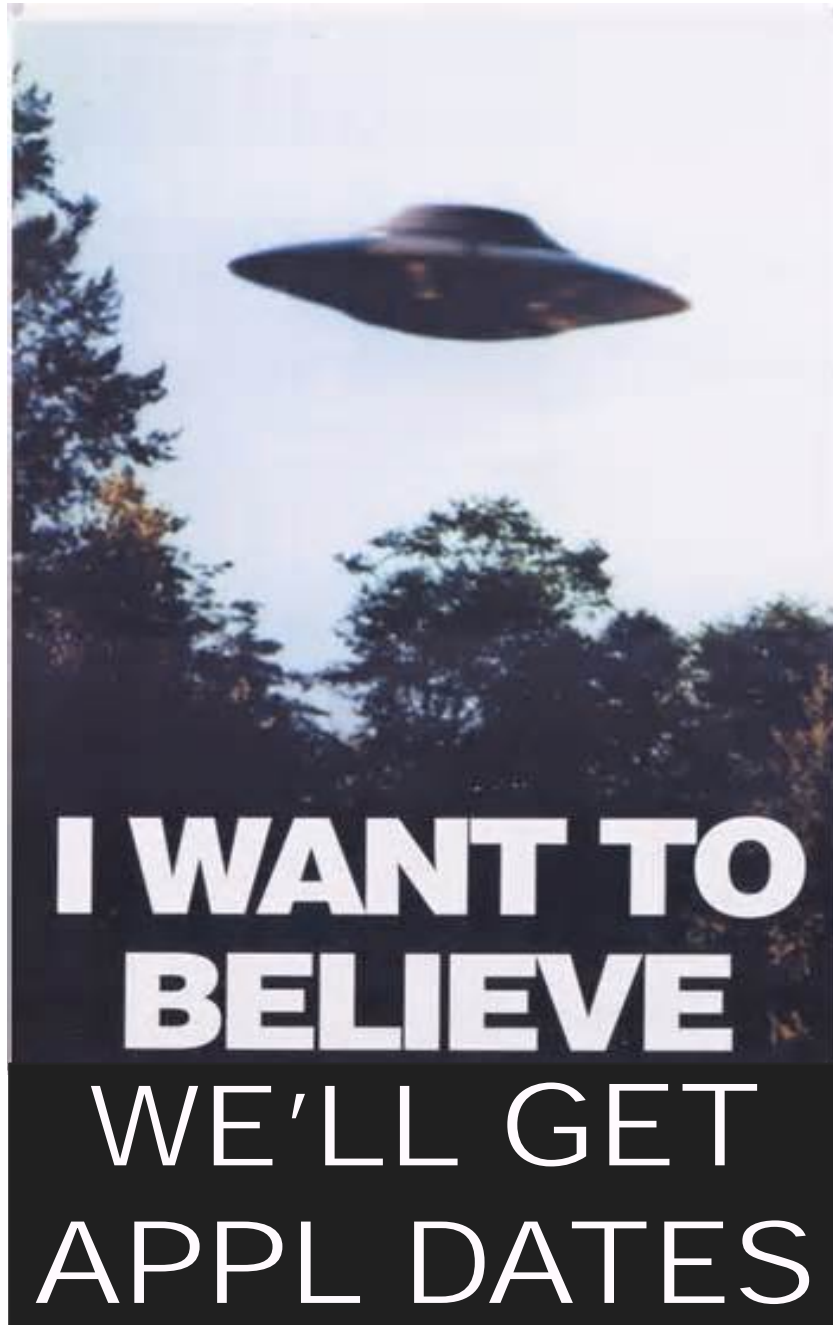








Targeted Trials

- We'll call to confirm dates as they approach but please contact us if there is any change in the chosen appl/harvest date.
- Copy both myself and Sherita in any emails you send us.
- We are targeting about 25% - 30% of your trials, if we miss a target, we'll have to pick another one of your trials.
- Travel costs increase the less lead time we have, which means we might have to sleep in your living room.





QA Targeted Trials

- Letting QA (Martin and Sherita) know when you have early trials starting 
- Timely communication
 - 7 P's 
 - Cheaper flights
- We're all on the same team 
- Same pot of money 
- Ignoring or "forgetting" this requirement 