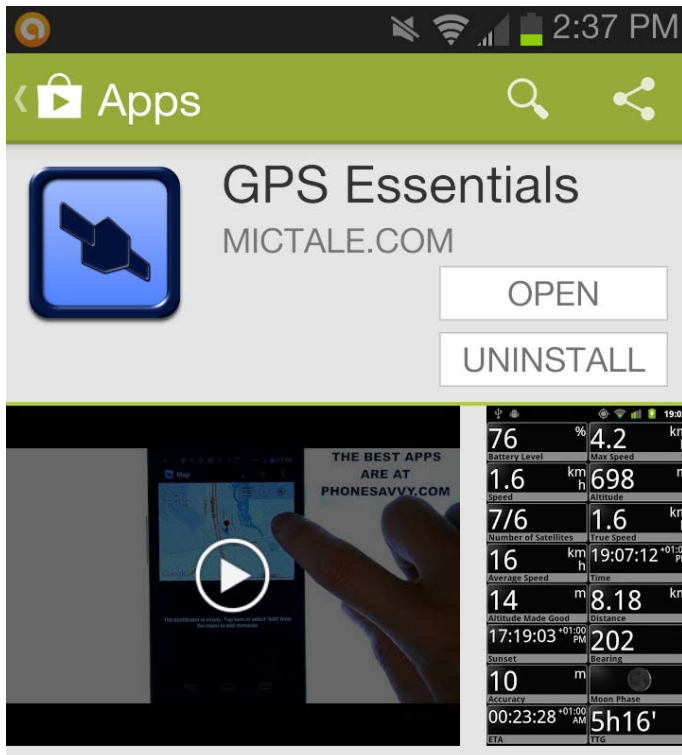


Using Your Android Phone & Google Earth for Plot Mapping

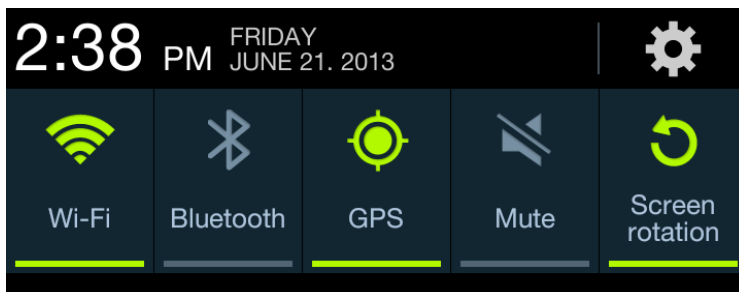
1) Download & Install Google Earth on your desktop computer (it's free):

(<http://www.google.com/earth/download/ge/agree.html>)

2) Go to Google play on your phone & download GPS Essentials by Mictale.com (it's free too):



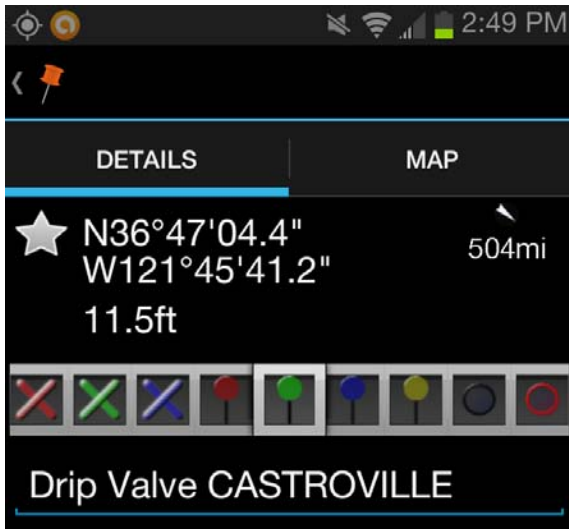
3) Check your phone settings & make sure your GPS is on:



4) Start GPS Essentials on your phone & go to way points:



5) Stand right at your chosen permanent marked and enter a waypoint. Identify the point with something like Castroville Drip Valve:



6) Now export this point in kml format to yourself:

Drip Valve CASTROVILLE.kml

Stephen Flanagan <srflanagan@ucdavis.edu>

You forwarded this message on 6/21/2013 2:46 PM.

Sent: Fri 6/21/2013 2:26 PM

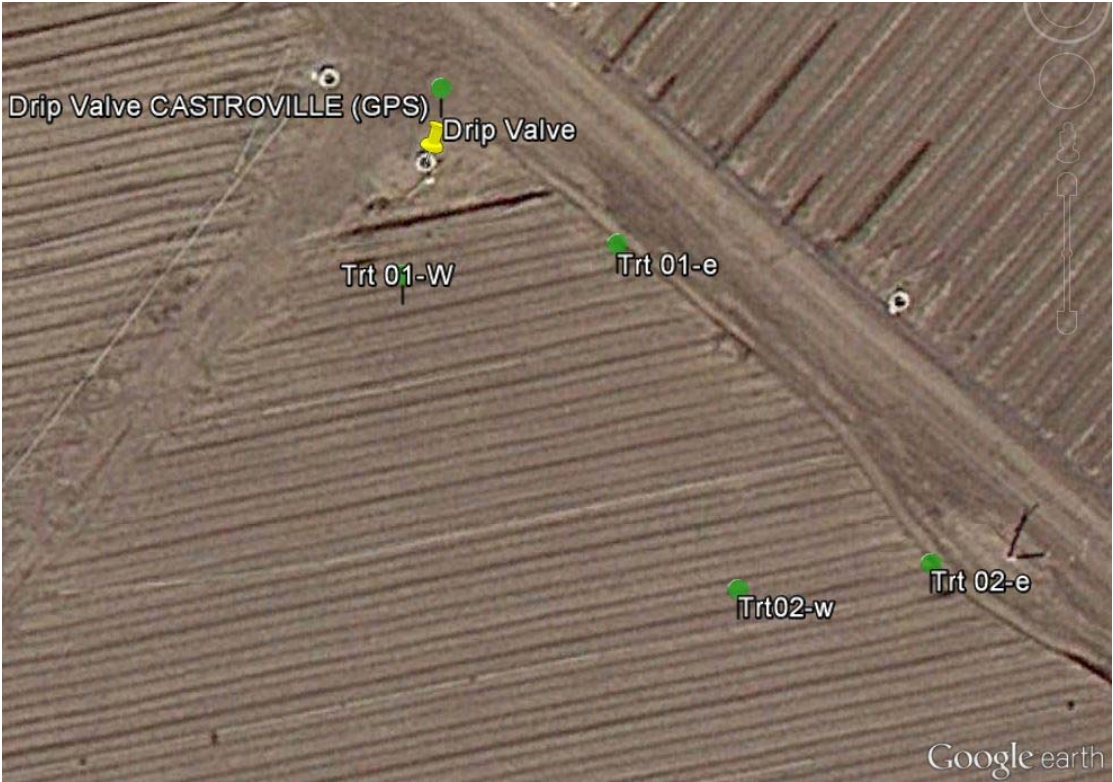
To: srflanagan@ucdavis.edu

Message Drip Valve CASTROVILLE.kml (6 KB)

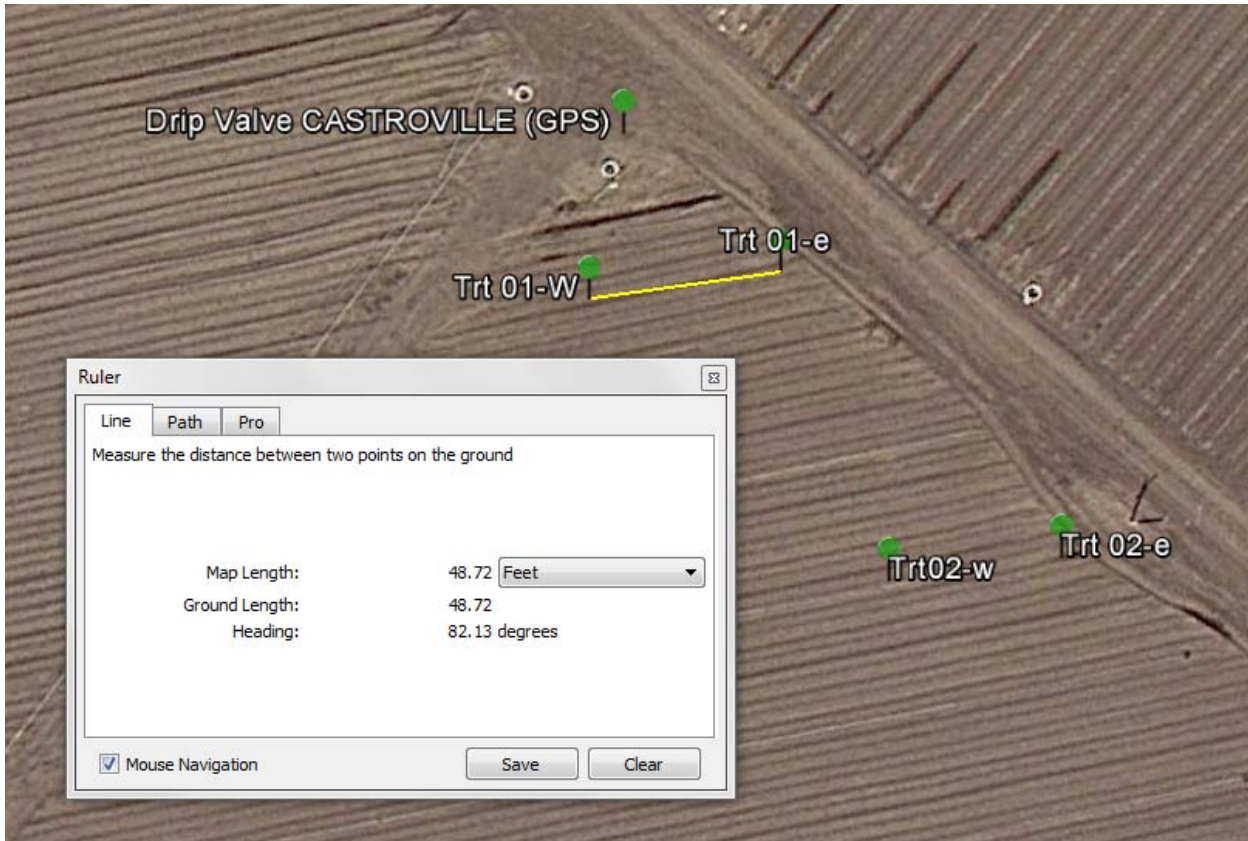
7) Now double click on the kml file and Google Earth will load & zoom to this point:



8) Repeat for your plot corner points:



9) Use the ruler tool to check your distances:



10) Use the drawing tools to finish out the map (Here is Bob Viales')

